

2015 USDOL/NAUIAP Training Conference

Scott B. Sanders

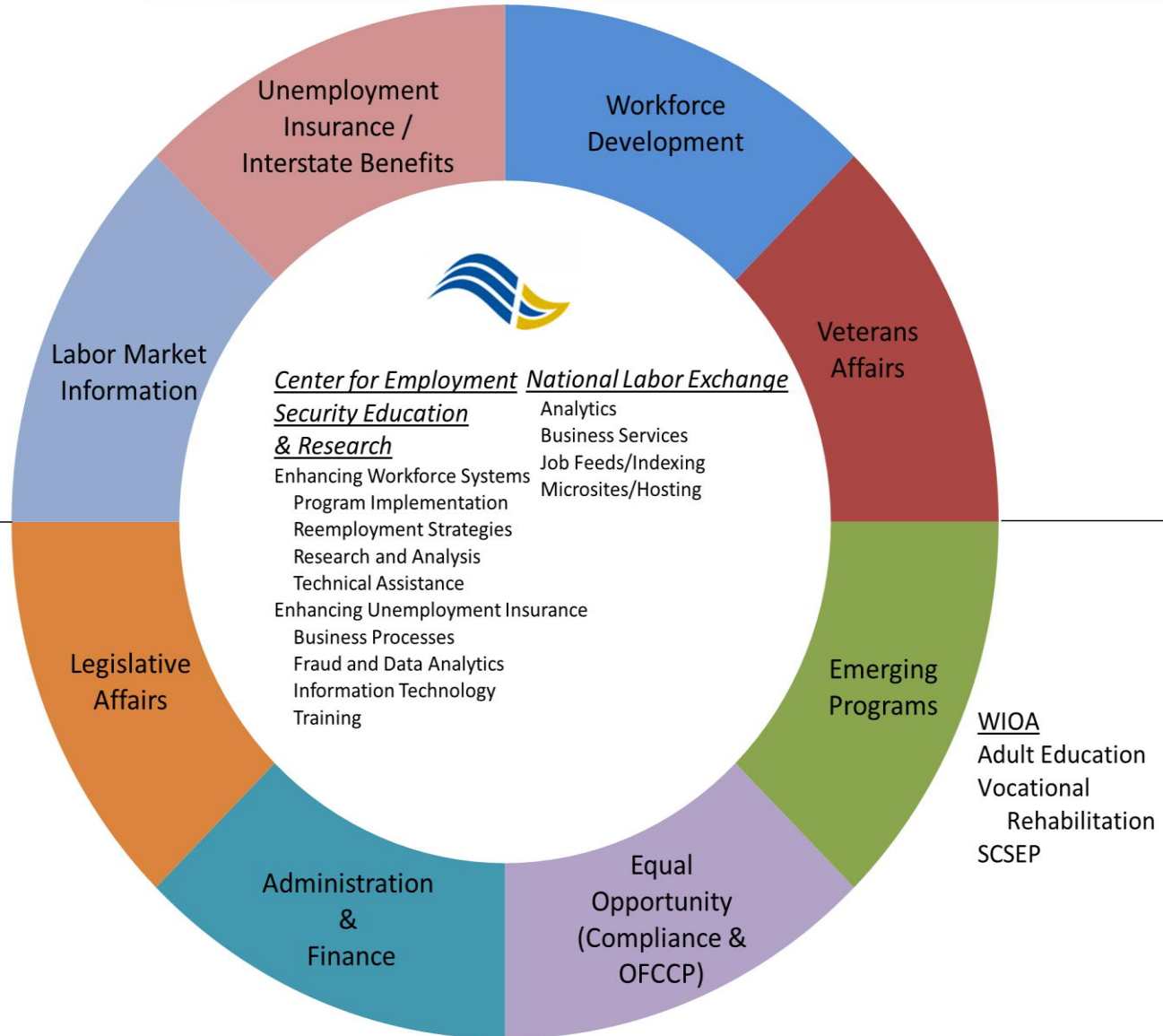
Executive Director

NASWA

June 23, 2015



Who is NASWA?



Follow the
**YELLOW
BRICK
ROAD**



Not every state
 has the same
 process for UI
 claims appeals



Funding for Unemployment Administration (Nominal & Constant 2009 Dollars)

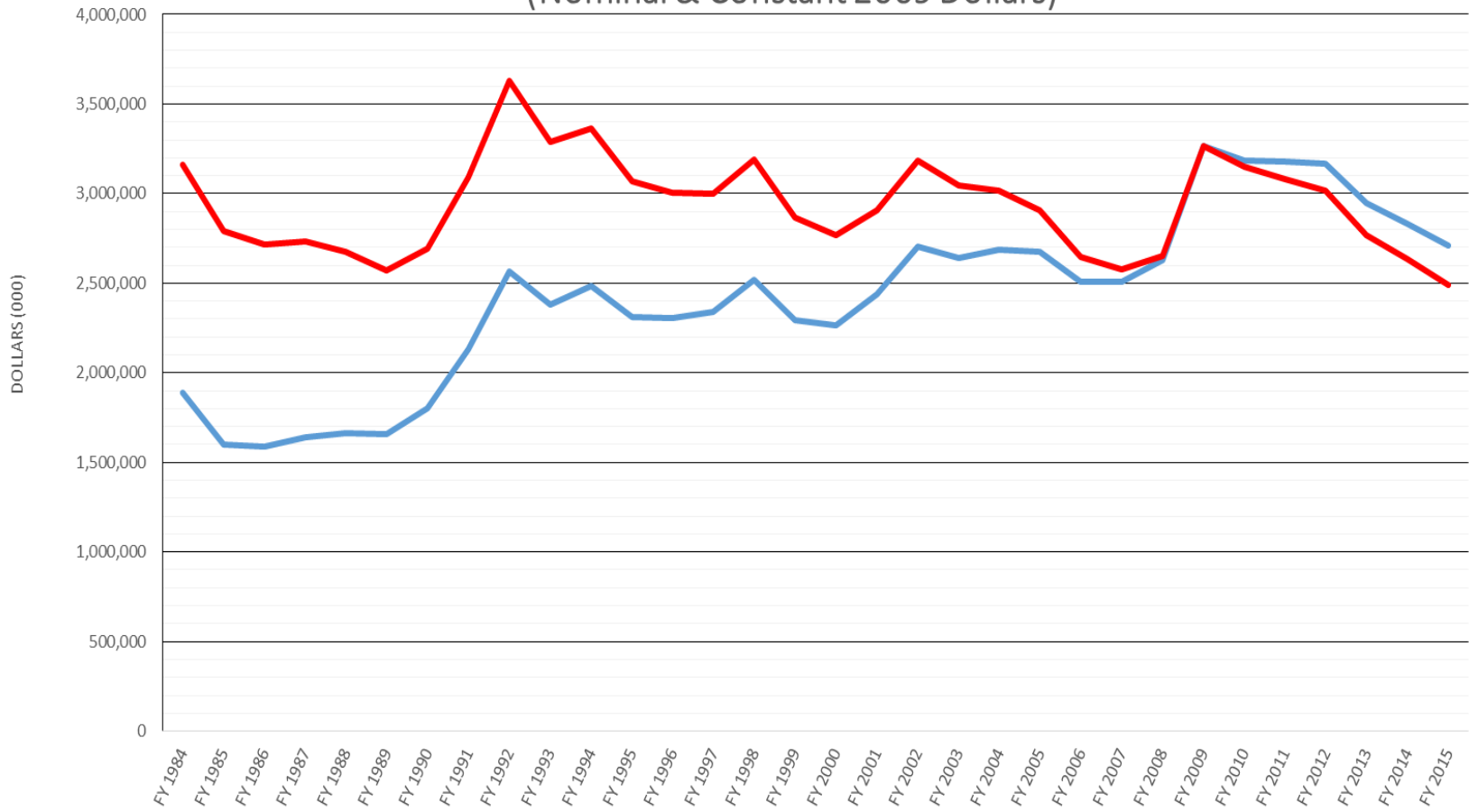
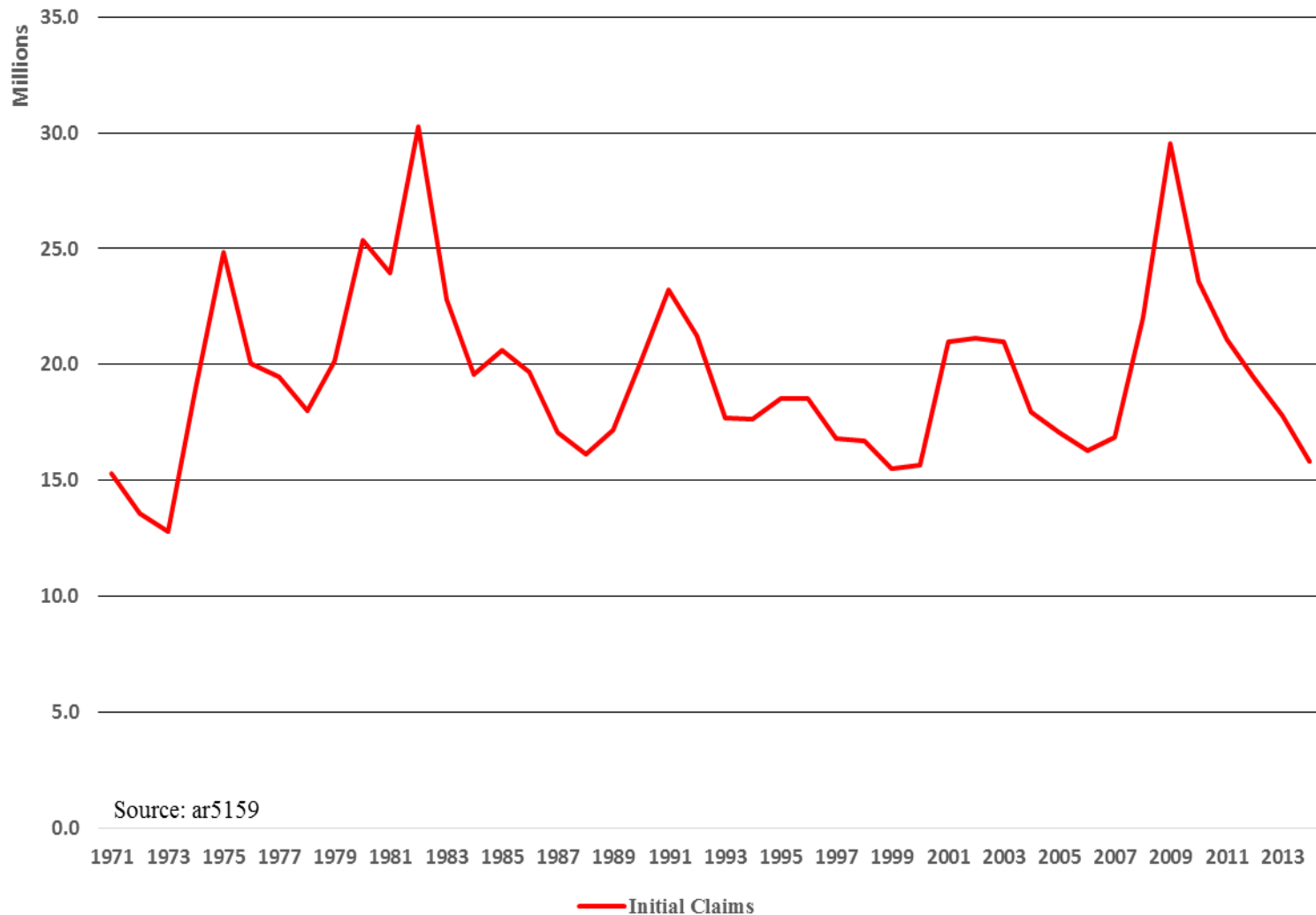


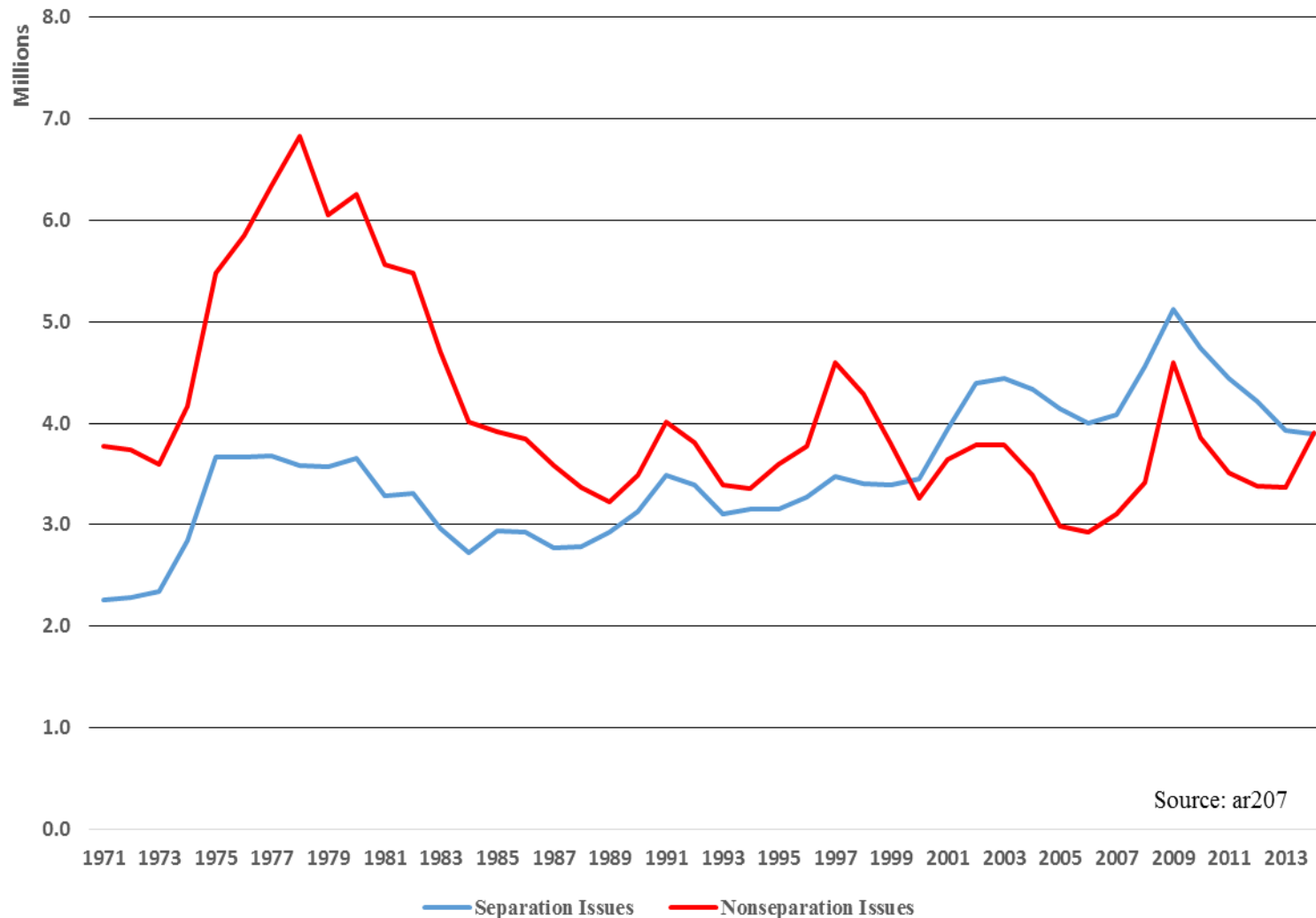
Chart: NASWA Data Source: USDOL

— State Unemployment Allocation — In 2009 \$

State Initial UI Claims (1971-2014)

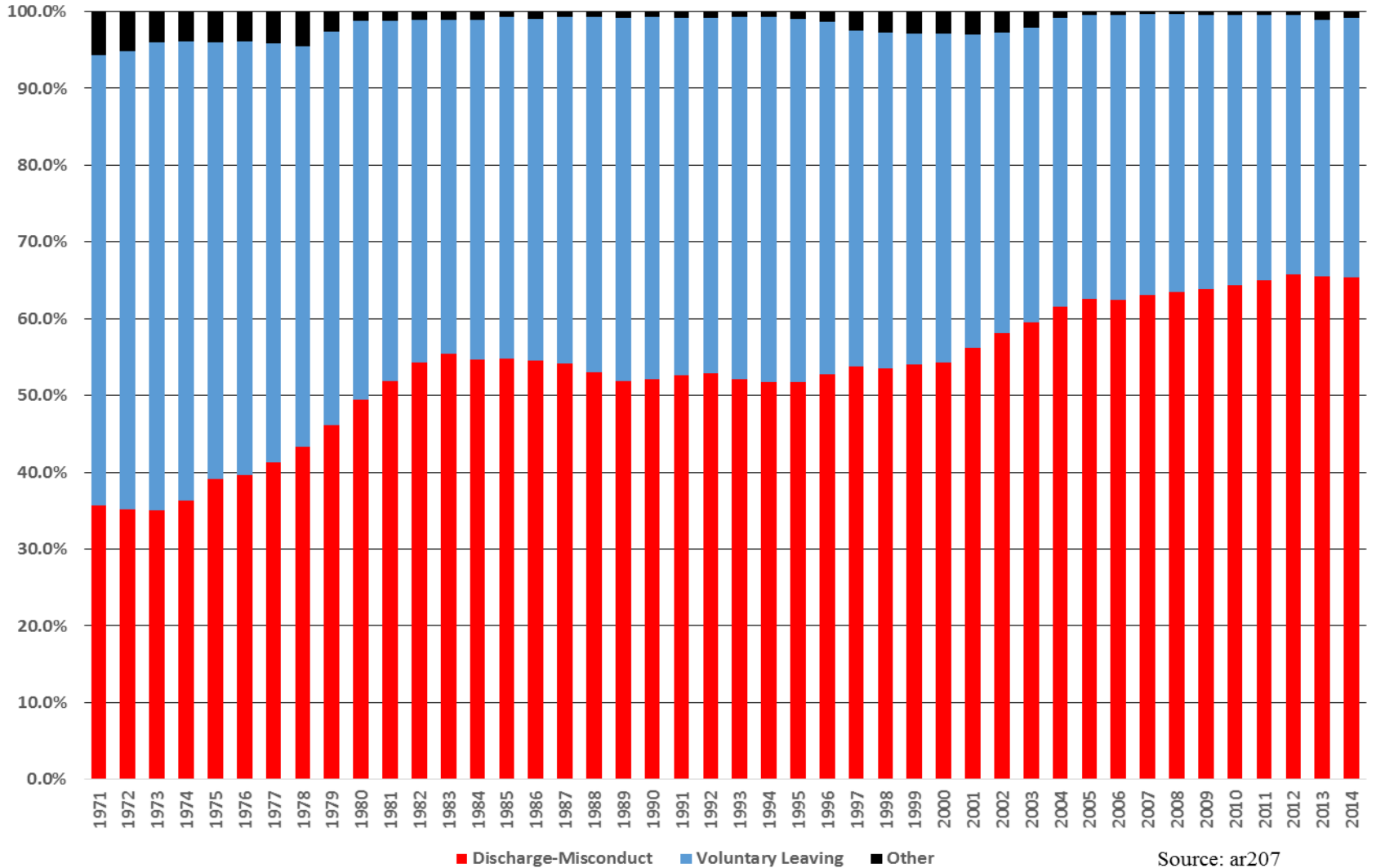


Nonmonetary Determinations (1971-2014)



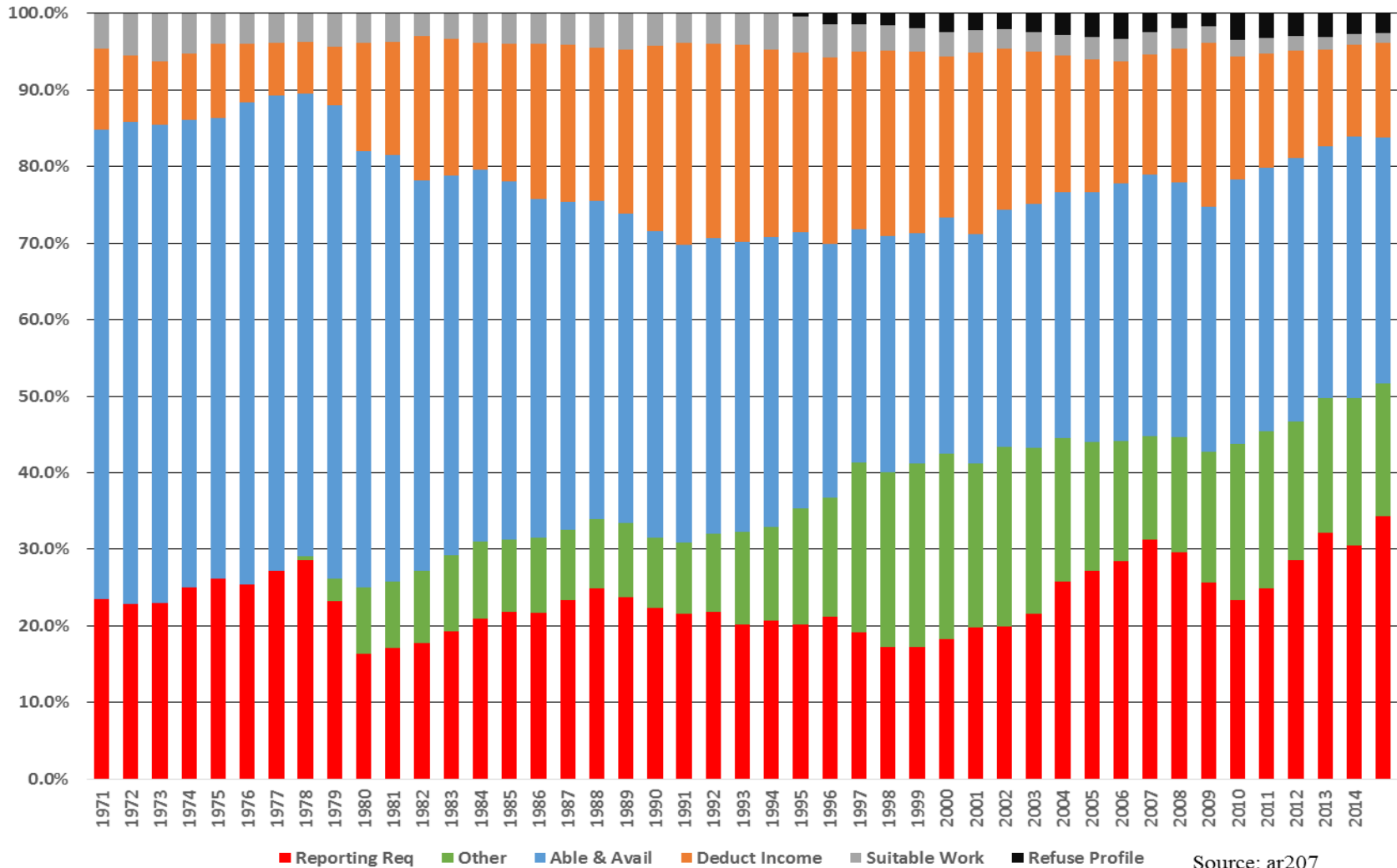
Source: ar207

Types of Separation Issues (1971-2014)

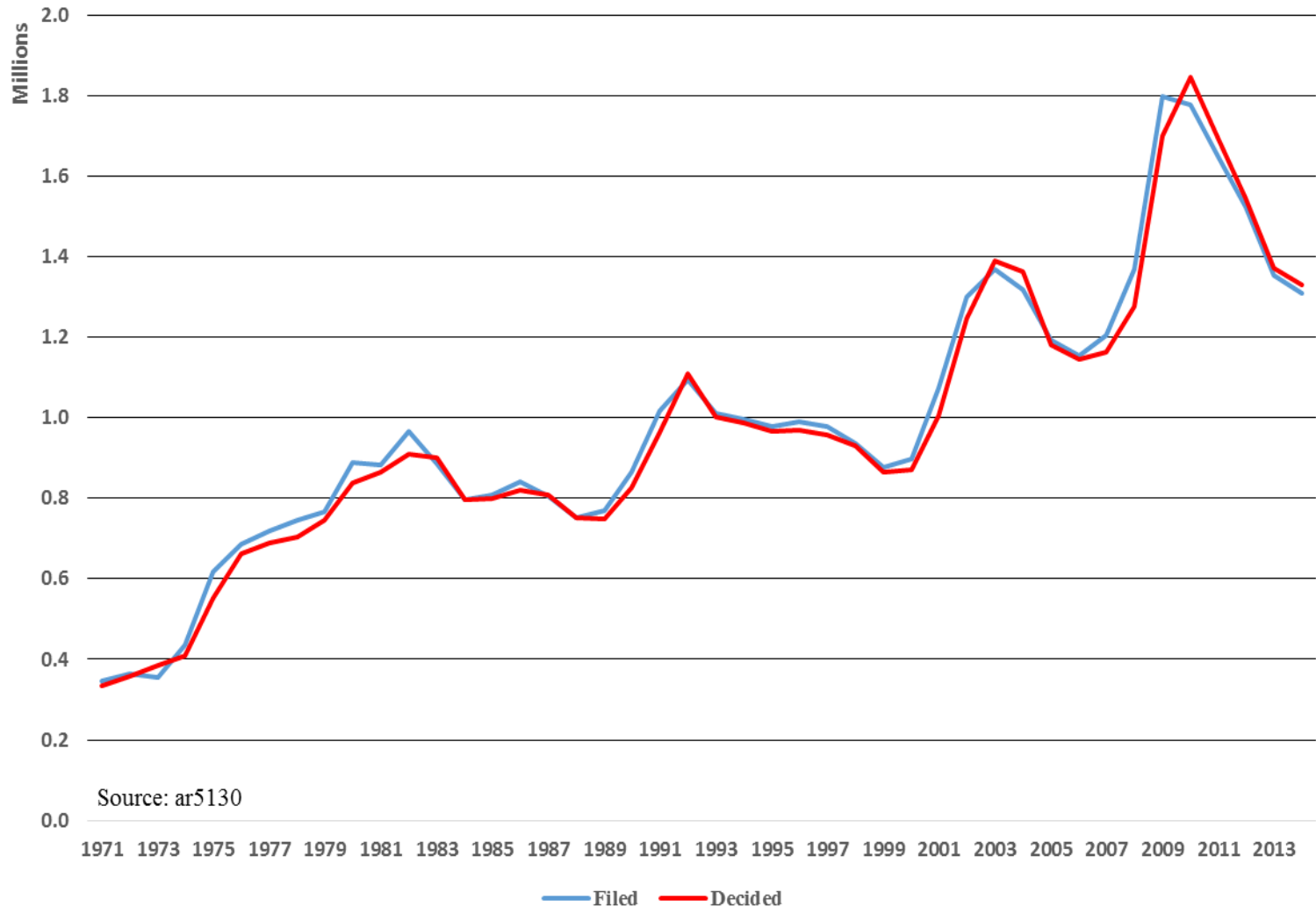


Source: ar207

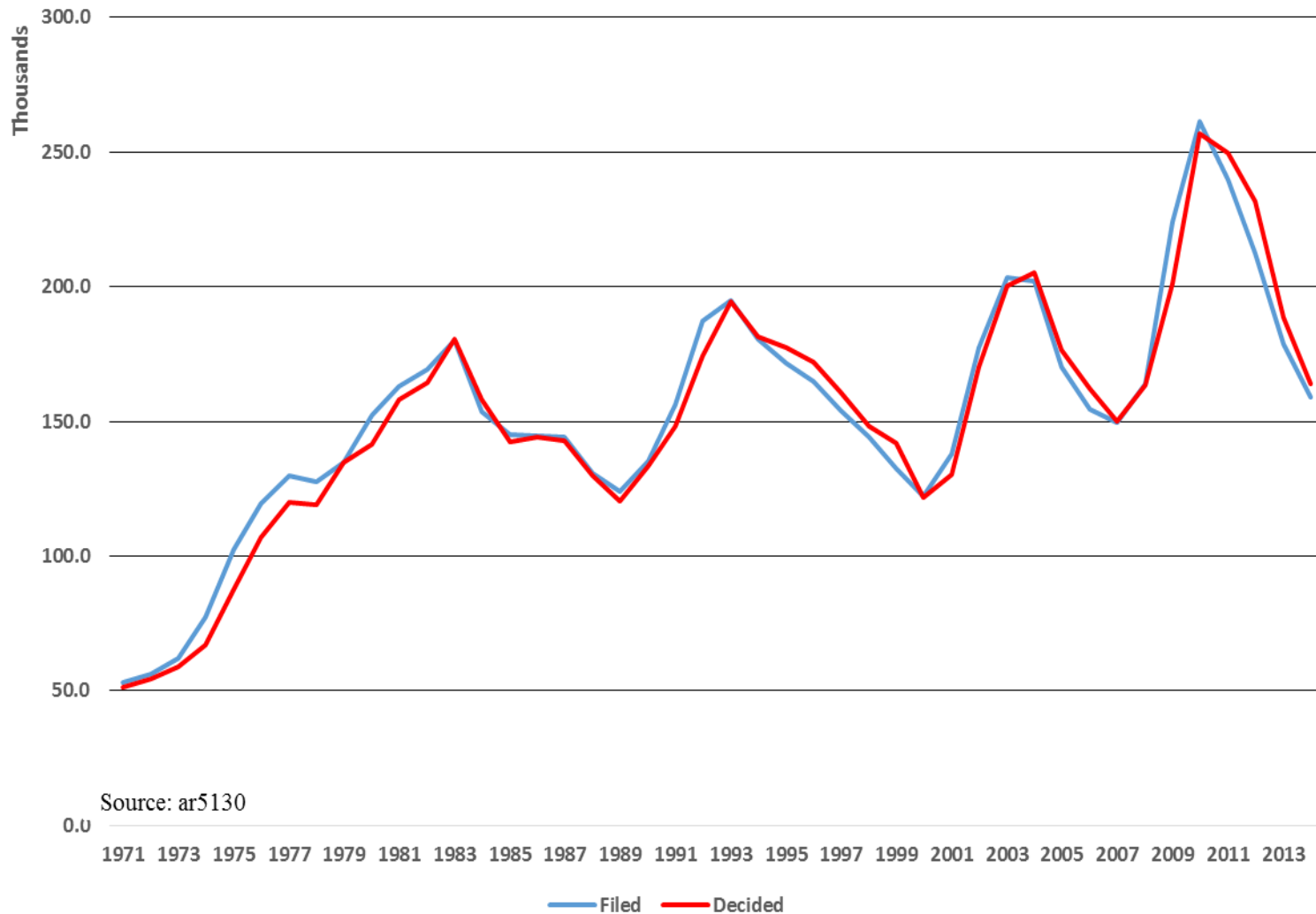
Types of Nonseparation Issues (1971-2014)



Lower Appeals (1971-2014)

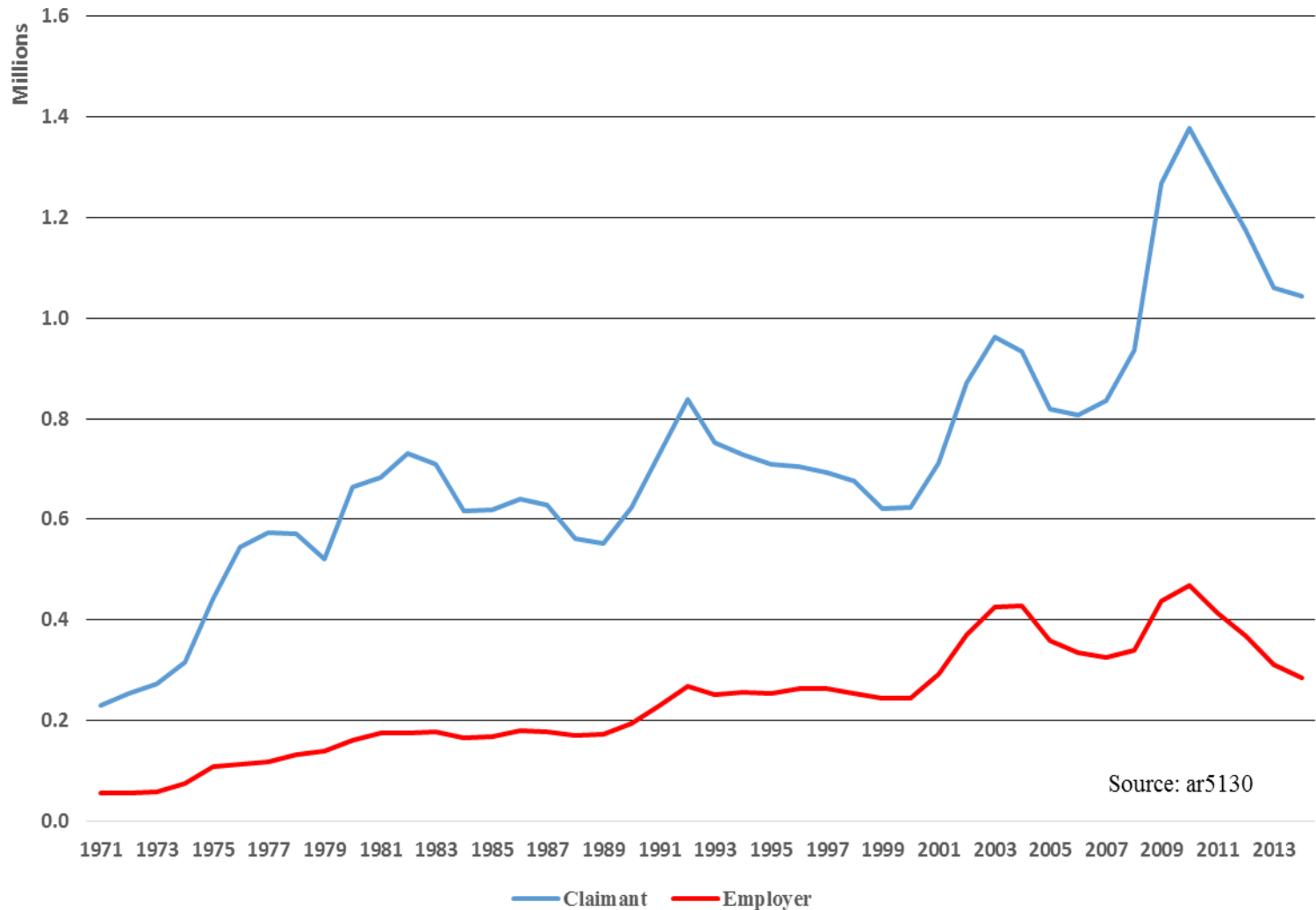


Higher Appeals (1971-2014)



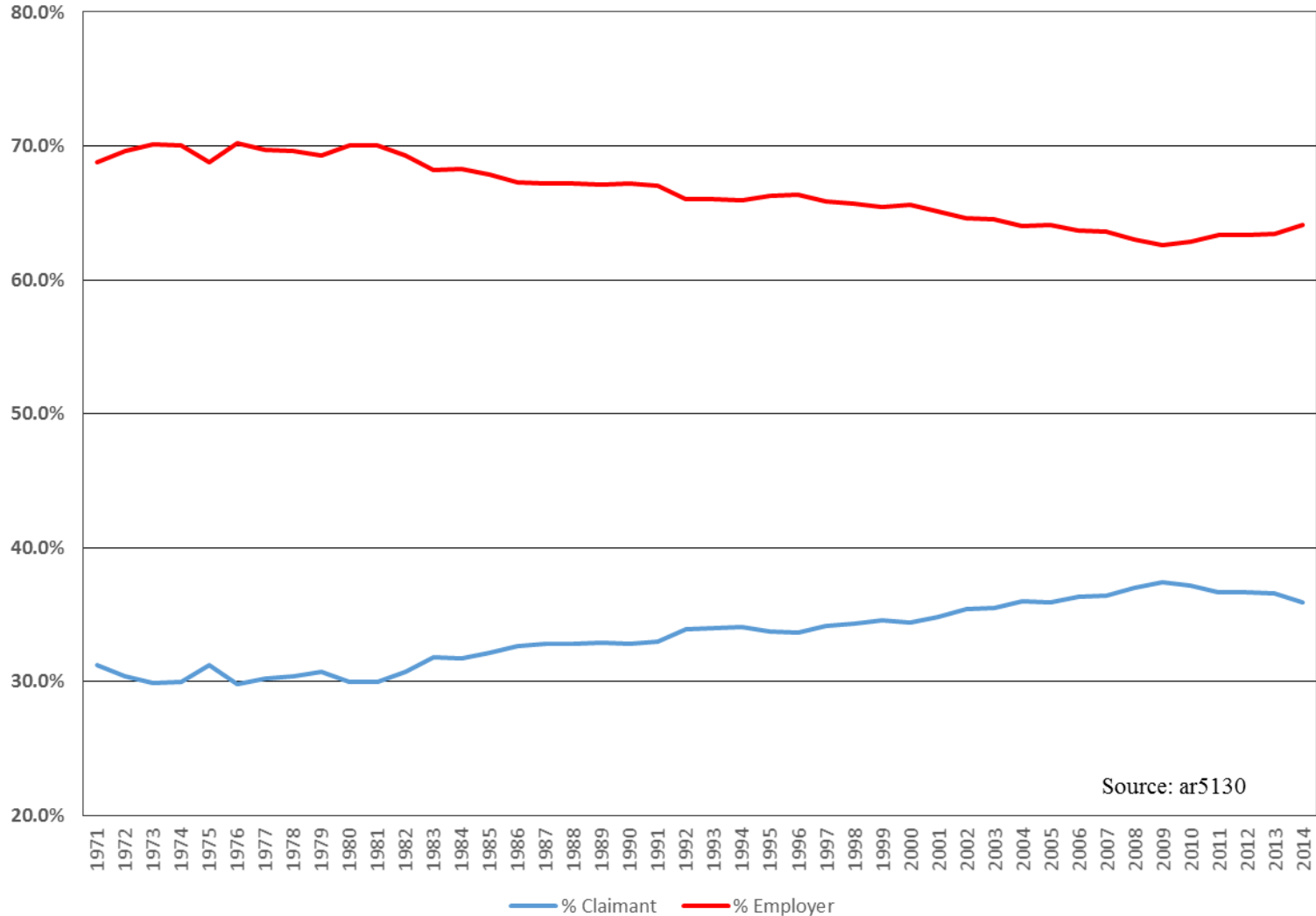
Source: ar5130

UI Appeals by Type (1971-2014)

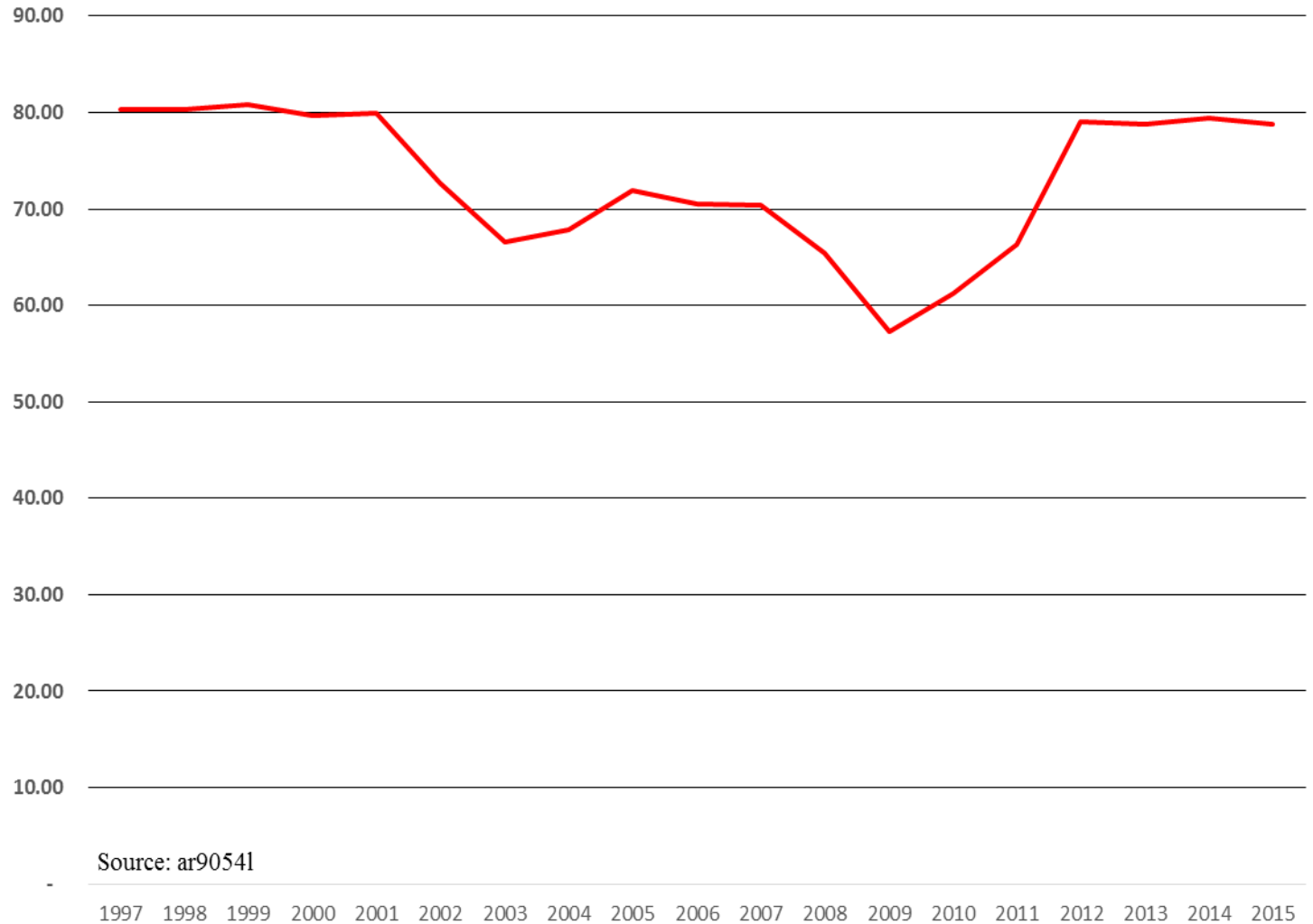


Source: ar5130

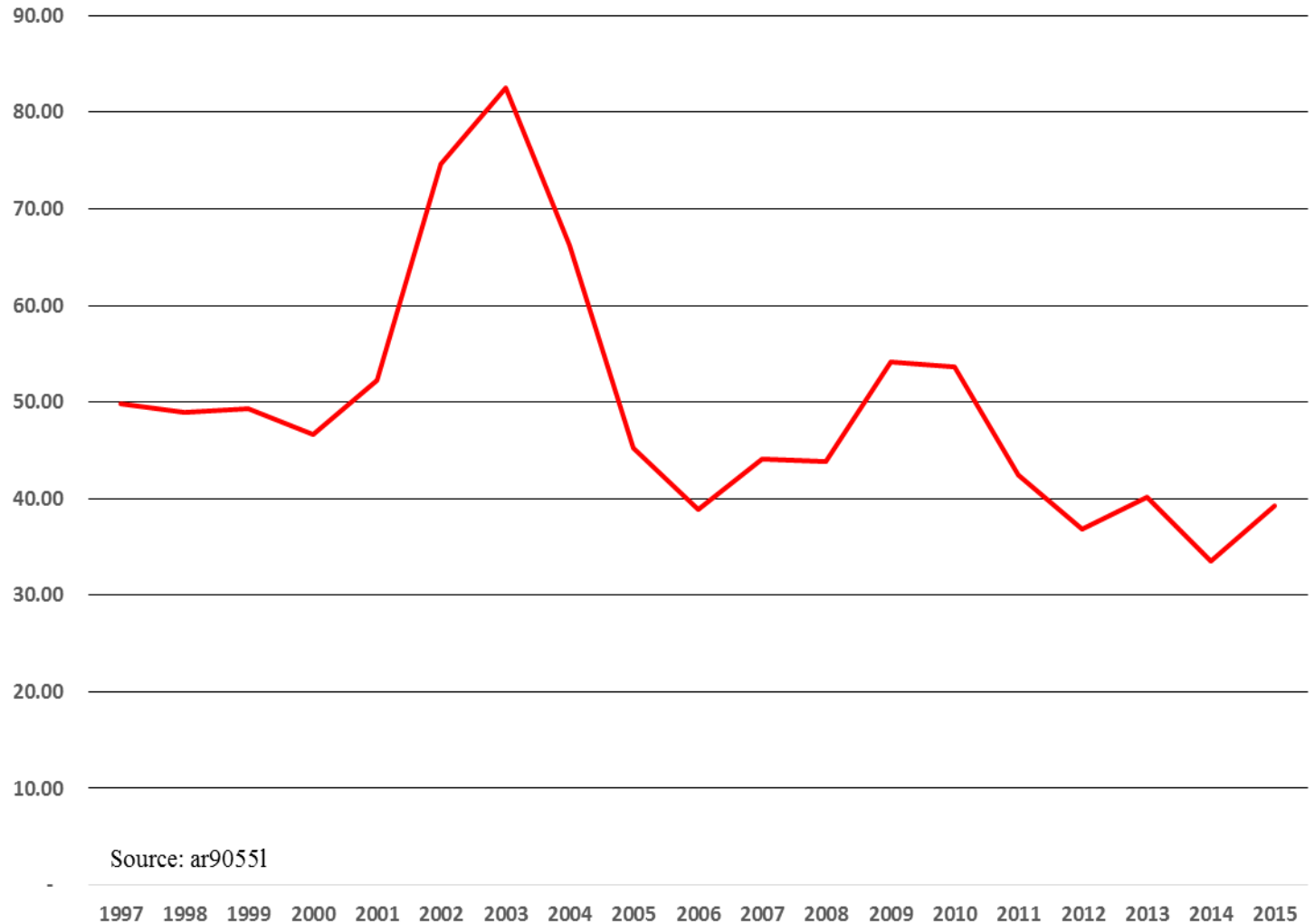
Decisions "won" by Employer vs Claimant-Lower Appeals



Lower Appeals Time Lapse-Average Days (using the midpoint of each range)



Lower Appeals Case Aging-Average Days (using the midpoint of each range)



Appeals challenges

- Burden of Proof
- Judicial Independence
- “Up in smoke”
- Staffing & Training
- UI IT system changes
- Other

THANK YOU!

Scott B. Sanders
ssanders@naswa.org